

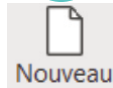
Digital embroidery machine - file preparation



1. Open the Hatch Embroidery software



2. Create a new design with the button



3. In the toolbox on the left or top of the screen, insert your image with :



Insérer illustration...

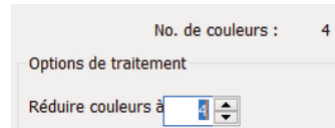
4. Then scan the image (replace the pixels in embroidery stitches) with :



Numérisation automatique de broderie...

5. The software automatically detects the number of colours, set the number of colours then "Ok".

→ Decrease the number of colours for faster embroidery, but with fewer shades.



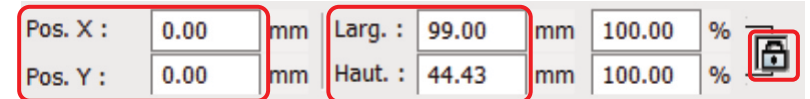
6. Remove an unwanted colour completely (e.g. the background of the image) by selecting "Omettre" and pressing "OK".

Numéro	Option	Couleur	Fil
1	Remplis: ▾	R62 G62 B62	
2	Omettre ▾		
	Remplissage		
	Détails		
	Omettre		

7. Move the embroidery to remove the original image and check the size and position of the embroidery at the top of the screen.

→ Always centre the embroidery by setting the X and Y positions to 0

→ Always leave a small margin (~1mm) from the chosen frame position
settings size settings proportional



Position settings

Size settings

Proportional locking

8. Select the embroidery to change it as desired: on the right of the screen, you can change the type of stitch.

9. Export the file to a USB stick for use on the machine:

File > "Export drawing..." Select the .PES file type and name your file

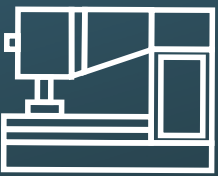
10. Insert the USB Key in the machine and in the menu select



Broderie

then

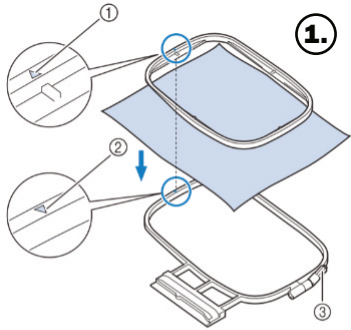




Embroidering a text on a fabric

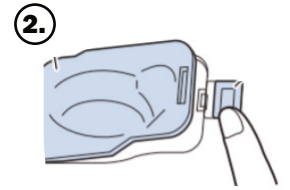


1. Place your fabric in the embroidery frame, making sure it is tight (*image 1.*)

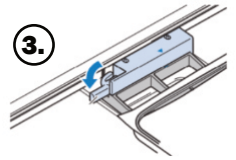
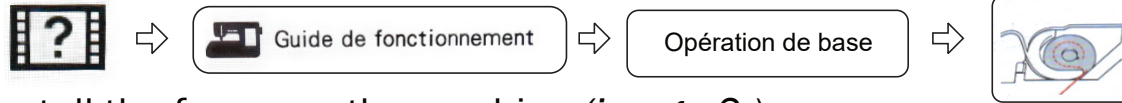


- ① Repère △ du cadre intérieur
- ② Repère ▽ du cadre extérieur
- ③ Vis de réglage du cadre

① 2. Check that there is enough bobbin thread (bottom thread) (*image 2.*)




3. If necessary, change the bobbin. Follow the instructions of the machine:



4. Install the frame on the machine (*image 3.*)

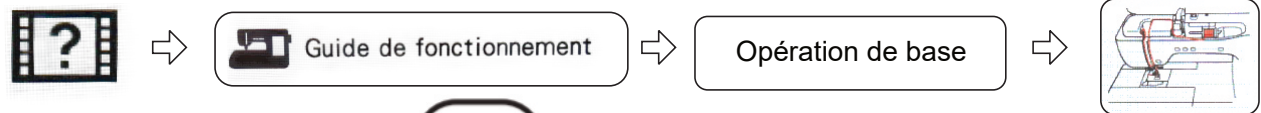
5. In the machine menu select  *Broderie* then to choose a font 


6. Write the text with the keyboard. The button  is used to change the font

size, the total size is shown in mm at the top of the screen.


7. Select  then 

8. To install the embroidery thread, follow the machine's instructions



9. Pass the thread through the needle catcher by pressing the button: 

10. Lower the presser foot by pressing the button: 

11. Press the "Start/Stop" button to start the embroidery 

If the green button remains red  call someone!